

# RockBox Jukebox Pro

by SoftJock, Inc.

## Operations Manual

Version 3.0

Release: January, 2006



## Contents

- [Overview](#)
- [Requirements](#)
- [Options - Admin Control Panel](#)

[Getting Started](#)

[RockBox Security Settings](#)

[Desktop Screen Settings](#)

[Startup Sort Order](#)

[Text Colors](#)

[Misc.](#)

[Skin & Logo](#)

[Equalizer](#)

[Scrolling Display/Adverts](#)

[The Library](#)

[Add Songs](#)

[Del Songs](#)

[Select All](#)

[Select None](#)

[Library Management](#)

[How to Use Libraries](#)

[Export Track list](#)

- [Jukebox Usage](#)

[Main Jukebox Controls](#)

[Player Controls](#)

- [Shortcuts/Controller Mappings](#)

## Overview

RockBox Pro is designed for commercial and/or rental use, in a bar, restaurant, hotel, etc., using a kiosk type of computer. It is modeled after a retro diner style jukebox, that you might find on the counter of many diners, and is designed to be very user friendly, and for easy maintenance by the administrator.

You can use RockBox with either a standard keyboard and mouse; keypad type controller (all functions are mappable to any controller that can map to keystrokes); a touch screen, or touch screen overlay.

The user has access to all basic features that they would find in a standard jukebox, and it is kept simple in order to minimize any potential confusion among the users.

The Admin can change many options of the jukebox, and lock the user out of the Config Options using a password.

## Requirements:

RockBox Pro requires Windows 2000 or XP to function properly, an 800 x 600 screen resolution or higher, any standard DirectX compatible sound card, and requires very little disk space for the program and it's data files.

We recommend a monitor of at least 15", and the screen resolution set to 800 x 600 for optimal viewing and ease of use to the user. In 800 x 600 size, RockBox fills up almost the entire screen, and the buttons are large enough to be easily usable on a touch screen monitor.

## Options

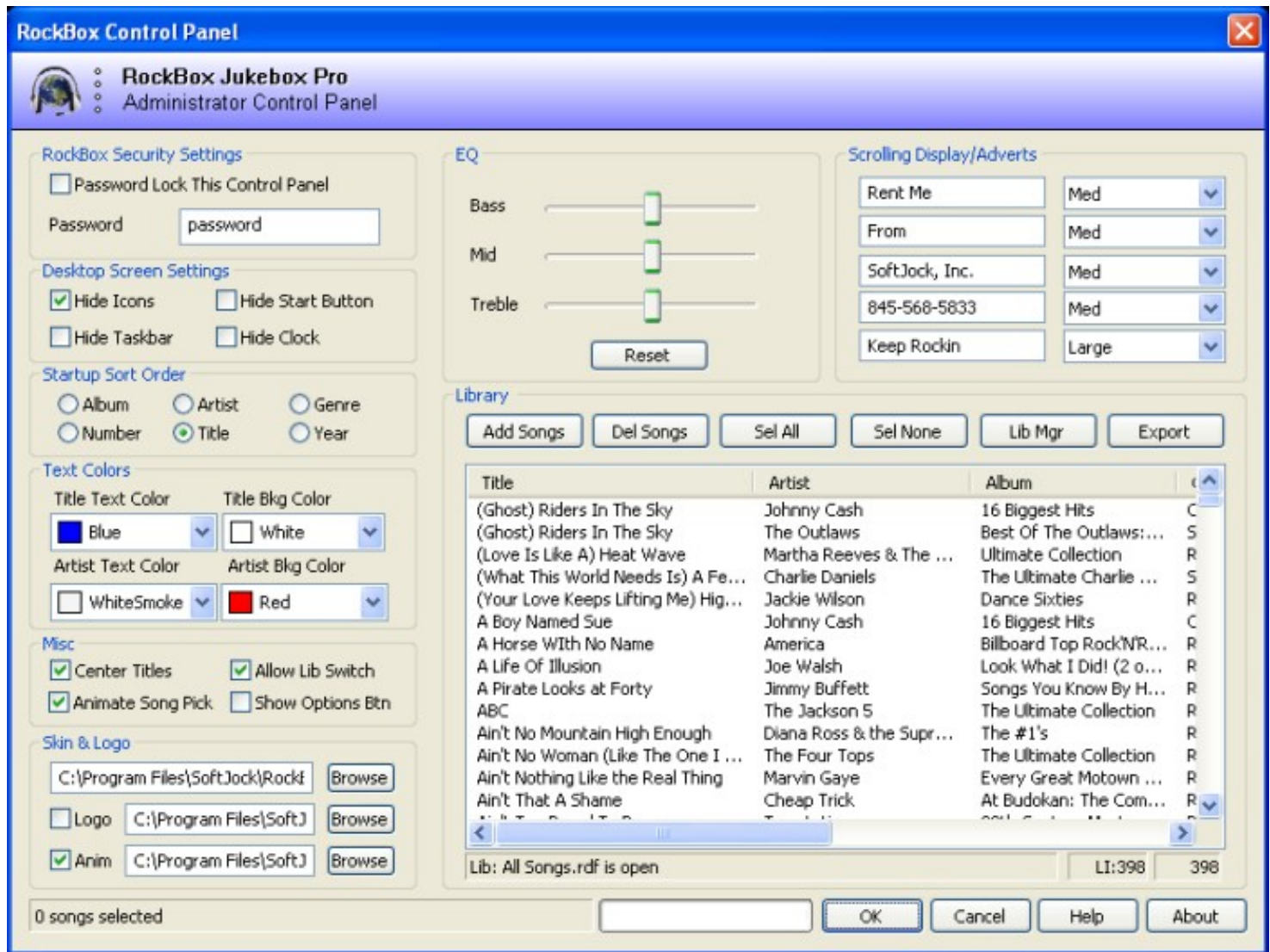
### Getting Started:

**\*\* The first thing to know, is that to exit **RockBox**, there is no Exit button on the screen. This is to keep the users from exiting the program. You can exit by using the key combination **Ctrl+Alt+X**. The full table of key mappings is at the bottom of this document.**

**\*\* The second thing to know, is that some features are disabled in the Trial Version of the software, and the **Trial Version cannot be unlocked**. Upon purchasing, you will receive a link to download the FULL version. List of disabled or limited items:**

- Export is disabled.
- Limit of 99 songs per library.
- The default scrolling display/adverts cannot be changed.
- The Skin, Logo and Animation cannot be changed.
- Each session is limited to approx. 30-40 minutes.

The first thing you will want to do, is set up the Admin features of RockBox for your particular setup. This can be accomplished by pressing Ctrl + O on the keyboard, or clicking the Options button if it is being shown (this is an option). You will then be presented with the Administrator Options screen, and can make any changes you like. Almost all features of the screen setup require a restart of RockBox in order to load the appropriate files and settings from the registry.



### RockBox Security Settings:

The Password lock this control panel check box, allows you to lock out the users from changing any settings for RockBox. If On, you will be required to enter the password that is settable in the Password edit box below this. The default password is the word "password" without the quote marks. We recommend you change that, as obviously anyone who reads this manual will know the default.

### Desktop Screen Settings:

These settings control how the Window's Desktop will look when RockBox is running. We recommend you set the background Window's color to black, as this provides a nice clean look around the jukebox screen. You can set this using the Window's Display Properties -- right click an empty area of your desktop, choose Properties, the Desktop tab, and choose Color. Under the Settings tab, you can

set the screen resolution to 800 x 600 as well.

Hide Icons, will hide all the program icons on your desktop.

Hide Taskbar, will hide the Window's Taskbar at the bottom of the screen.

Hide Start Button, will hide the Window's Start button.

Hide Clock, will hide the Window's clock in the lower right corner.

It is recommended you enable all of the above features to get the best possible display, and keep the users from accessing other programs while RockBox is running.

### Startup Sort Order:

These radio buttons will allow you to set the order in which the songs are displayed when RockBox starts up. Only one option can be enabled at a time. The default is to use Title sort order.

### Text Colors:

Here you can set the color of the song titles and artist display, both foreground and background. The foreground text color is fairly self-explanatory. The background colors are used for setting the backgrounds if you use a different skin. They do not fill the complete area of the standard white or red parts, and are meant to be used to blend in with whatever background you design.

### Misc:

Center Titles, does exactly that. If this setting is unchecked, the titles and artist names will be left aligned.

Animate Song Pick, will display a CD that comes out of the song title when clicked or pressed on a touch screen.

Allow Lib Switch, will show the Library button on the main jukebox screen. The user can then switch back and forth among the available libraries, using the slide up window that appears. The library switching can also be accomplished by using Ctrl+L from the main jukebox screen, whether this option is on or off.

Show Options Btn, will replace the Sort button on the main screen, with the Options button. Not recommended for user access, and should be changed before you put the software out for use by the general public.

### Skin & Logo:

We provide a couple of skins with RockBox, and you can also make your own if so inclined. Clicking the Browse button will allow you to change the skin. Changing the skin requires a restart of RockBox.

### **Technical and Legal notes on Skins:**

RockBox skins are plain Window's bitmap files (\*.bmp), and you can make your own providing you use the proper size, and adhere to the guidelines of our licensing agreement, e.g., the RockBox(tm) logo must appear at the top, and the SoftJock logo must appear in it's full size, usually in the center of the main screen. If you choose to design a skin, you will be able to download these two items from our website support page for inclusion on your skin.

The dimension of the bitmap used, must be the same as our two sample bitmaps -- 800 x 570 pixels @ 72 PPI (Pixels Per Inch). Anything using bright green (RGB 0, 255, 0), will appear as transparent on the jukebox screen, so if you need to use green, use a shade slightly off from that RGB value.

Logo: If the logo box is checked, RockBox will use whatever logo is in the edit box, to put at the top center of the screen in place of album art. If you do not have your MP3 files tagged with album art, you can create a logo and have it displayed. The logo is also a simple bitmap, and should be 120 x 100 pixels @72 PPI. We recommend using the album art function though, as the art will be displayed as each song starts to play, and will remain there until the next song is played.

You can use any commercial or freeware MP3 tagging software that supports album art, to tag your files with the art. We recommend Tag &

Rename, as it can easily look up the artwork on the internet, and add it to your file tags, and MusicMatch also works well.

**Anim:** If the Anim box is checked, RockBox will display an animated marquee in the center of the screen. You can choose from a number of different neon type GIF files that we have included, or make your own animation. The size should be 126 x 67 pixels @ 72 PPI or larger (larger sizes will scrunch up to fit), and can be made with any software that can create standard animated GIF files.

### Equalizer:

RockBox has a simple 3 band equalizer included. The sliders control Bass, Mid and Treble frequencies, and update immediately. When you close out the Admin Control Panel using the Ok button, these settings are saved to the registry. The Rest button brings the EQ back to the center (flat) position.

### Scrolling Display/Adverts:

You can have up to 5 lines of text display in the scrolling display on the main jukebox screen. This is useful if you are renting out the jukebox, and want to put your company name, telephone number, etc. in there. You can change the size of the display text for each line, using the drop down boxes to the right of the text edit field. You will need to experiment with how much text you can enter per line, depending on the size of the font you choose. The text will get clipped on either side if you put too many characters in.

There are three lines that are always displayed along with your text, and that is so users can contact our company in the event they would like to purchase a copy of the software for themselves, or if they have any other questions about the software.

### The Library:

RockBox can use multiple libraries to make life easy for the user and the Admin. By default, RockBox will create a new library called RBTracks.rdf upon startup the first time (see below for info on how to use the multi library feature properly).

### Add Songs:

This is where you add songs to your current library. This will pop up an Add Tracks screen, that will have your computer's (and network) drives listed on the left navigation pane, and a file list on the right.

To add songs, highlight a folder on the left, and if it contains MP3 files, they will be automatically displayed in the right file list pane. If you have the Search sub-folders option checked, RockBox will search anything under what you have highlighted as well. For example, after opening the Add Tracks screen, check the Search sub-folders option button, then click on a drive letter like Local Disk (C:), and RockBox will search your entire hard drive for MP3 songs (**Note: Search sub-folders is off by default so the Add Songs screen loads quicker, you need to check it prior to clicking on a drive, if you want to search the whole drive**). This can take anywhere from a few seconds, to a few minutes depending on the size of your drive, and the number of files on it. You will see a message in the status bar that says searching, and can break out of the search if necessary using the ESC key, although we recommend you let it search to completion.

When you have your file list in the right pane, you can select whatever files you would like added to the current library, or simply click the Select All button to select all found MP3 files.

Click the Add button, and RockBox will begin parsing and adding the files to you library list.

When completed, the status will show how many files were added, and whether there were any exceptions that could not be added for one reason or another. If so, the Exception button will become enabled, and you can view the filenames of tracks that could not be added, and a reason for why they could not be added. Usually, a corrupted file or bad MP3 tag information is the culprit, and is usually found on tracks that have been obtained illegally through file sharing programs. Many people who use these programs, do not bother to properly tag their files when ripping them, and also, the record companies sometimes make bogus or corrupted MP3 files available on these networks to discourage illegal downloading. It is your responsibility to insure you have properly tagged and legal files - we accept no responsibility in this area.

If you have the Check For Dupes button checked before clicking the Add button, RockBox will do a lookup in the current library for any tracks it is about to add, and if the filenames are identical, it will not add them again. This slows down the add somewhat, but insures you do not have duplicate songs in your library. It is still possible to have duplicates, if you have two of the same song with differing filenames, in which case, you can delete one of them from the library.

## Del Songs:

This button will delete any songs from the library that you have highlighted in the file list. This does not delete the actual MP3 file from your computer, only removes it from the current RockBox library listing. If you need to clean out the entire library, simply click Select All, then click the Del Songs button.

## Select All:

Simply highlights and selects all songs in the file list.

## Select None:

Un-selects all songs in the file list.

## Lib Mgr (Library Manager):

This will bring up the library management screen, where you can Create, Rename, Delete and Switch To libraries. The only one that really needs explanation is Create: Just type a name into the edit box, and click the Create button next to it. The new, blank library, will be created and added to the list of libraries. You can then Switch To it, and Add Songs to it.

## How to Use Music Libraries

A library is simply a collection or list of songs you can play at any given time. You can have as many libraries as you like, and there is no limit to the number of songs in each library listing. Each song can also belong to any number of libraries. The library listing (or data record) for each song, stores the song title, artist name, album name, genre, song number, play counter, filename, etc.

The recommended way to setup your libraries, is to keep it simple, so the users can switch back and forth with as little effort as possible. We recommend the following library names (although you can call them whatever you want), because then the users will basically see the same thing on any RockBox they might use, whether it be at a party, in a bar, etc. It is similar to a short genre list, and the names should be kept short as well, so that they are fully displayed in the Library Switch box. The names marked with an asterisk, have standard icons associated with them in RockBox, which will be displayed on the Library Switch box, if the names are typed as shown. If they do not match, a standard music note icon will show:

All Songs : This would be the main library, with all songs you make available to the users. Includes all songs in lists below. Optional.

\* Classical : Beethoven, Bach, etc.

\* Country : Here you can put country music, like Hank Williams, Willie Nelson, Johnny Cash, Kenny Chesney, etc.

\* Disco : Disco songs from the late 70s/early 80s, like Night Fever, Disco Inferno, Car Wash, YMCA, etc.

HipHop : Rap type music, like 50 cent, Eminem, Ice-T, etc.

\* Jazz : Jazz greats, like Duke Ellington, Charlie Parker, Dizzie Gillespie, etc.

\* Metal : Heavy metal classics, like Led Zeppelin, Aerosmith, Motley Crue, Def Leppard, etc.

\* Motown : Motown and Soul classics, like The Temptations, Spinners, Four Tops, etc.

Pop : Pop music like Michael Jackson, Frank Sinatra, Britney Spears, Rod Stewart, N-Sync, etc.

\* Rap : Rap type music, like 50 cent, Eminem, Ice-T, etc.

\* Reggae : Sounds of the Islands, like Bob Marley, Peter Tosh, UB40, Jimmy Cliff, etc.

\* Rock : Standard rock classics, like John Mellencamp, Tom Petty, The Eagles, Rolling Stones, etc.

\* Southern : Good old rebel rock, like Lynyrd Skynyrd, Charlie Daniels, Allman Brothers, Wet Willie, etc.

\* Vocalist : Frank Sinatra, Dean Martin, etc.

Here's what 8 of these look like to the user:



We also recommend you narrow this down to eight (8) choices or less. Why? Because 8 happen to fit fine in the Library Switch box, without the user having to scroll, which can be hard using a touch screen or controller. You should be able to get away with eight or less without a problem, and still find a category (library name) to put most songs into, that people can identify with.

**Number of songs in your libraries:**

Another mentionable point is the number of songs you give to the users to play. RockBox libraries have no limit to the number of songs in each, although practical limits are fairly easy to figure out. 24 songs will display per page in the main jukebox screen, which means 40 pages for about 1,000 songs. If you make 20,000 songs available to the user, they will spend all day scrolling through the 800 pages, and never get to playing anything!

Anything over about 1500-2000 songs is overkill for the purposes for which RockBox was designed, which is ease of use, and to keep the party going. I have a rather extensive music library, yet I only have about 700 songs on my RockBox, because I would spend forever finding the song I wanted to hear. If you figure a low average of 3 minutes per song, that's 35 hours of music, without ever playing the same song twice!

There is also another practical limit, and that is that RockBox, which is modeled after commercial jukeboxes, only allows 4 digits for the song number if the user is entering via the number pad. This equals 9,999 songs that can be played via the keypad. All songs could be displayed, even with larger numbers, but could not be accessed via the keypad.

**Export:**

Here you can export your current library to a text/CSV file. It simply pulls up a file save screen (with a default name of RBTracks.CSV), and will export all tracks, and all fields. You can then import this into Microsoft Excel, or any other program that can read delimited text files, and then sort them, print them, etc.

Many Admins like to use this feature to make a booklet of songs available to the users in differing formats, so they can sit down at a table and look through them, without standing in front of the jukebox for a long time.

Once you've imported them into Excel or another program, you can remove what fields (columns) you don't need, and print the rest out.

**Jukebox Usage**

**Main Jukebox Controls:**



The jukebox controls on RockBox are very similar to any standard jukebox you might find in a diner or bar.

- 1) **Number buttons:** These are used to enter the song number that you want to play. They respond to a mouse click, touch screen, keyboard/keypad, and are also mappable to a controller.
- 2) **Song display:** This displays the current song playing title, then artist, then the title of the next song in the queue, or a message that the queue is empty, pick another song.
- 3) **Sort display:** This will display the sort order that the list is currently being shown in. Abbreviations are TI: Title, AR: Artist, AL: Album, GE: Genre, YR: Year, NU: Number.
- 4) **Random display:** This is right under the sort display, and will show **RND** in red if the jukebox is placed in random play mode.
- 5) **Music Library display and button:** If you have the Allow Lib Switch set on, the user will see the **Library** button below the display, if off, the user will see the Library name only. Clicking the Music Library button, will pull up a list of libraries available, and the user can simply click or press the library they want, and the list will automatically update and display, and the box will disappear.
- 6) **Number entry display:** This will show all zeros, unless a user is entering a song number, in which case it will show the numbers being entered. If a non valid number is entered, it will display a short message to that effect.
- 7) **Playlist (queue) counter:** This will show the number of songs waiting in the queue to be played.
- 8) **Reset button:** You use this button to reset the current numeric entry field if you make a mistake. For example, the user wants to play the song numbered 0212, and started keying in 031 instead. They can click or touch the Reset button, and the numeric entry will be reset to all zeros, and they can try again. The most usual case for using this though, is somebody might have just hit the keypad by accident, and left the numeric entry in limbo with just a couple numbers in it. The user can then click Reset and clear the entry.
- 9) **Clear button:** This will clear the current playlist queue, but will not effect the song playing.
- 10) **Sort/Options button:** If you have the Show Options Btn set on, the user will see the **Options** button here, if off, the user will see the **Sort** button.

If the user clicks or touches the **Sort** button, the list of sort icons will slide into place, and the user can simply click or touch one of them to sort in that order, and redisplay the songs. The sort box will disappear automatically after an icon is clicked or touched, so the user does not have to do anything else. There are six available sorting options, Album, Artist, Genre, Number, Title and Year.

If the **Options** button is showing, the user will be taken to the **Admin Control Panel**, unless the **Password Lock** is set on, in which case, they will be presented with a box asking for the password.

- 11) **Random button:** This will put the jukebox in random play mode, and the letters **RND** in red will appear to the right of the current song playing display. Touching or clicking it again, will turn off the random mode.

Random mode will pick songs in a pseudo-random order each time the previous song is completed. You can enter a song via keypad or touch at any time random mode is on, and the song will go into the queue and be played next. Random mode is still on in this case, but the jukebox will play anything in it's queue before picking another song itself. The songs are picked from the entire current library being displayed.

Many users will prefer to have random mode on at all times, this way music will play continuously, yet they are able to put in songs at any time they choose.

- 12) **Left and right arrow buttons:** Simply move the song list display up or down through the available songs in the library. These respond like the others to click, touch or are mappable.

## Player Controls:



**Volume control:** Is a slider that works left to right, with left being the lowest volume, and right being the highest volume. Works with mouse dragging, touch screen or the up and down arrow keys.

**Next button:** Will advance to the next song in the queue if one is there, if not, it will have no effect. Responds to mouse click, touch or is mappable.

**Play/Pause button:** If the jukebox is playing, this will pause it, and display a message in the song title display to the effect that the playback is paused. If already paused, this will resume play of the song, and return the song title display to normal.

**Mute button:** This will mute the output of the player, but the song will continue to play. Clicking or touching it again, will un-mute the player.

## Shortcuts/Controller Mappings

Virtually all of RockBox's functions can be accessed via keyboard shortcuts. These also allow you to map each function to external controllers capable of using macros to do the mapping, such as the XKeys controllers. Here is the table of shortcuts, and their corresponding usages:

Keyboard Shortcut	Usage Notes
Numpad 0	Equivalent to clicking the 0 button
Numpad 1	Equivalent to clicking the 1 button
Numpad 2	Equivalent to clicking the 2 button
Numpad 3	Equivalent to clicking the 3 button
Numpad 4	Equivalent to clicking the 4 button
Numpad 5	Equivalent to clicking the 5 button
Numpad 6	Equivalent to clicking the 6 button
Numpad 7	Equivalent to clicking the 7 button
Numpad 8	Equivalent to clicking the 8 button
Numpad 9	Equivalent to clicking the 9 button
Left Arrow	Page left in the display
Right Arrow	Page right in the display
Up Arrow	Volume up
Down Arrow	Volume down
Backspace	Reset numeric entry
Delete	Clear playlist
Ctrl+1	Sort by Title
Ctrl+2	Sort by Artist
Ctrl+3	Sort by Album
Ctrl+4	Sort by Genre
Ctrl+5	Sort by Year
Ctrl+6	Sort by Number
Ctrl+Right Arrow	Skip to next song in playlist
Ctrl+C	Clear playlist
Ctrl+L	Bring up Library Switch Screen
Ctrl+M	Mute On/Off

Ctrl+O	Go to Admin Control Panel
Ctrl+P	Play/Pause
Ctrl+R	Random mode On/Off
Ctrl+S	Stop current song playing, and clear playlist
Ctrl+T	Reset numeric entry
Alt+Left Arrow	Rewind
Alt+Right Arrow	Fast Forward
Alt+M	Minimize RockBox
Alt+R	Restart current song
Alt+S	Display sort box
Ctrl+Alt+X	Exit the program